



XYLO PAINTS



© 2024 - 25 Xylo Paints







ABOUT US



Xylo paints was started over a decade ago by technocrats who were keen to be solution providers to the various problems that the paint and construction was facing. Since then Xylo has always been a **PART OF THE SOLUTION.**

Xylo Paints appreciates healthy competition and tries to provide you with a wide range of paints for various surface coatings that are designed to meet the technical specifications and the expected quality of our valued clientele.

Through our motto of **HONEST SELLING**, we ensure that each and every product goes through thorough quality checks in all stages of production, and we do so by implementing a comprehensive quality plan. This is achieved through continuous training and building on our capacity for Innovation without compromising the end result.

Xylo Paints also strives to provide you with affordable and fair prices that are at par with the industry's pricing structure.

Our QMS is constantly and consistently being improved so as to keep up with market demands. This helps us forge and form lifelong relationships with our customers.



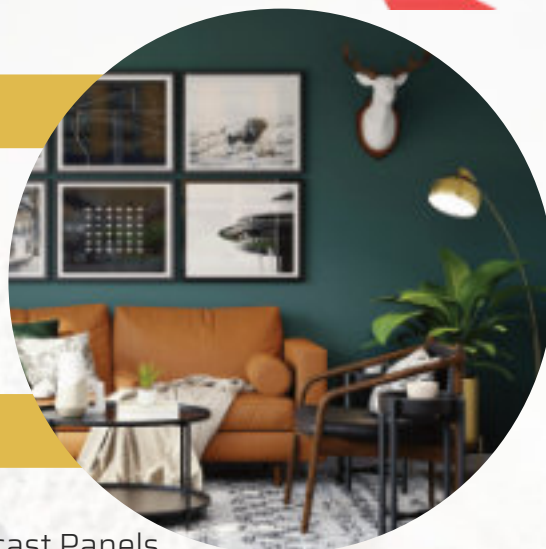
Email xylo@xylopaints.com
Website www.xylopaints.com
Contact +91-9810156132



RANGE OF PRODUCTS

INNOVATIVE PRODUCTS

- Magic Xp** -Elastomeric Paintable Putty/Plaster
- Rusto** - Rust Inhibitive Primer
- Wrap & Peel** - Liquid Masking



SPECIALIST SERIES

- No Crack** - Joint Filler for Cement Boards & Precast Panels
- AAC Bond** - Super Polymerized Bond for AAC Block Pasting
- Tilo** - Polymerized Adhesive for Tile on Tile & Granite Pasting
- Gypo** - APJC Polymerized Jointing Compound for Gypsum Board
- Gypo Plus** - Polymerized Compound for Joints & Surface Preparation
- P-Laster** - Coarse Polymerized Mortar
- Fill-O-Crack** - Grout cum Crack Filler
- Flexo** - Crack Filler

WATER REPELLANT

- Sealo** - Silicone Based Water Repellant (For stones and porous surfaces) available in dry and wet look



WATER PROOFING COMPOUND

- LPPO** - Leak Proof Part 1 (For Fine Voids)
- LPPT** - Leak Proof Part 2 (For Bigger Voids)

PRIMERS

- R - One** - Water-Based Primer
- R - Two** - Solvent Based Wood Primer
- XXX** - Red Oxide Metal Primer





RANGE OF PRODUCTS

ENAMELS

- Pro** - Glossy Enamel
- Matty** - Matte Enamel



INTERIOR RANGE

Economical Range

- OB-2** - Oil Bound Distemper
- Glory** - Acrylic Distemper
- Info** - Interior Emulsion

Premium Range

- Spade** - Premium Washable Emulsion
- Silkina** - Luxury Emulsion



EXTERIOR RANGE

Economical Range

- Exto** - Exterior Emulsion

Premium Range

- Exto Premium** - Premium Exterior Emulsion
- Weather Touch** - Anti-fungal Emulsion



TEXTURES

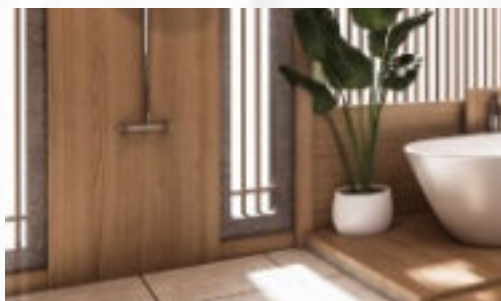
- Rolex** - Roller Finish
- Dew Drops** - Spray Finish
- Rustex** - Trowel Finish
- Sanddunes** - Brush Finish
- Softex** - Soft Texture
- Stone Finish** - Stone Look Finish



RANGE OF PRODUCTS

WOOD FINISHES

- NCC** - N. C Sealers
- NCL** - N. C Lacquer
- Mylo** - Melamine (Gloss/Matte)
- Xyco** - Coloured N. C Finish (Gloss/Matte)
- Solo** - Polyurethane Clear (Gloss/Matte)
- Solo Solid** - Polyurethane Coloured (Gloss/Matte)



DESIGNER RANGE

- Cascade** - Dual Tone Textured Effect with Metallic
- Show Off** - Elegant Dual Tone Finish with Graphic Pattern
- Dual Touch** - Metallic Dual Tone Finish with Rustex Texture
- Weave Magic** - Weave Effect, Brushing in Dual Tone
- Flora** - Flora Prints on a Metallic Base
- Illusions** - Dual Tone Finish with Metallic
- Monotone** - Mono Colour Metallic Finish
- Gold Mine** - Two Tone Gold Leaf Effect
- Silk Cut** - Two Tone Silver Leaf Effect
- Crackle** - Available in Regular & Metallic
- Italiano** - Marble Finish
- Roller Magic** - Roller Finish with Semi-Gloss Paint



OUR INNOVATIONS





MAGIC XP | INNOVATIVE PRODUCTS

ELASTOMERIC PAINTABLE PUTTY/PLASTER

- ➔ LEAK FREE
- ➔ CRACK FREE
- ➔ ANTI FUNGAL
- ➔ ECO FRIENDLY
- ➔ WASHABLE



Magic XP White



Magic XP Regular

CHARACTERISTICS

- Excellent flexibility
- Hydrophobic
- Excellent adhesion
- Indentation resistant
- Smooth surface
- Pre-mixed with primer

UTILITY AREA

- Gypsum board & calcium silicate board
- Cement board panels
- Fine coarse sand plaster
- P.O.P.
- Pre painted surface
- RCC
- Mivon
- AAC bricks pasting

TECHNOLOGY INVENTED THROUGH MAGIC XP

Elastomeric | Hydrophobic | Impregnation | Film Formation | Indentation Resistant | Excellent Adhesion

COVERAGE OF MAGIC XP 20 KG IN 2 COATS

Fine sand plaster	250 - 275 sq.ft
Coarse sand plaster	150 - 175 sq.ft
Punning on AAC blocks (3-3.5 mm)	55 - 60 sq.ft
POP surface	500 - 600 sq.ft
Gypsum board	475 - 500 sq.ft
Cement board (including jointing and taping)	150 - 175 sq.ft
Mivon	180 - 200 sq.ft



RUSTO | INNOVATIVE PRODUCTS

RUST INHIBITIVE PRIMER

CHARACTERISTICS

- Converts rust into stable iron
- Stops oxidation process
- Strong chemical bonding
- No need for strong base preparation
- Clears 800 hours of salt spray test
- Available in transparent & pigmented format



COVERAGE: 1300- 1400 SQ.FT, PER 20 LTR



WRAP AND PEEL | INNOVATIVE PRODUCTS

LIQUID MASKING

CHARACTERISTICS

- Available in liquid form
- Covers all articles except cloth
- Prevents items from dust & stains
- Peel-able film
- Biodegradable film

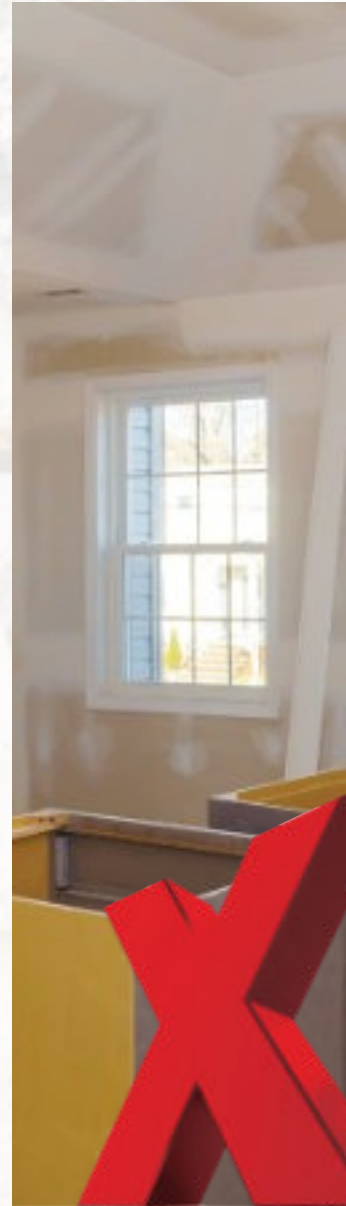
Available in V-15 (Vertical Surfaces) and H-30 (Horizontal Surfaces)



COVERAGE: 45-50 SQ.FT, FOR V-15 | 25 TO 30SQ.FT FOR H-30



OUR SPECIALIST SERIES



NO CRACK | SPECIALIST SERIES

FOR CEMENT BOARDS/PANELS & PRE CAST PANEL JOINTS



CHARACTERISTICS

- Exterior grade
- Good shelf life
- Available in ready to use paste form
- Covers the joints completely & gives a seamless finish
- Excellent co-efficient of expansion & contraction
- Works like a shock absorber



COVERAGE: 250-300 SQ.FT, PER 20 KG ON PANELS

COVERAGE: 1000 SQ.FT, PER 20 KG ON BOARDS

AAC BOND | SPECIALIST SERIES

SUPER POLYMERIZED BOND

CHARACTERISTICS

- Crack free bond
- Exterior grade
- Excellent adhesion
- Water repellent
- Ready to use paste



COVERAGE: 64 SQ.FT ON 100MM WIDTH, PER 20KG



TILO | SPECIALIST SERIES

POLYMERIZED ADHESIVE

CHARACTERISTICS

- Ready to use paste
- Tile on tile pasting
- Water repellent
- Exterior grade
- Excellent adhesion



COVERAGE: 60 SQ.FT, PER 20 KG



GYPO | SPECIALIST SERIES

POLYMERIZED JOINTING
COMPOUND

CHARACTERISTICS

- Interior grade
- APJC for gypsum board
- Gives seamless surface
- Ready to use paste
- Excellent coverage (covers 40 board joints & tapping in 20 kg)



COVERAGE: 1,000 SQ.FT, PER 20 KG



GYPO PLUS | SPECIALIST SERIES



POLYMERIZED COMPOUND FOR JOINTS & SURFACE PREPARATION

CHARACTERISTICS

- Polymerized composition
- User-friendly application
- Ready-to-use paste
- Versatility
- Excellent adhesion
- Durable finish
- Crack-free formula
- Gypsum board compatibility



COVERAGE: JOINTS: 75-80 SQ.FT, PER KG | SURFACE: 475-500 SQ.FT, PER KG (2 COATS)



P-LASTER | SPECIALIST SERIES

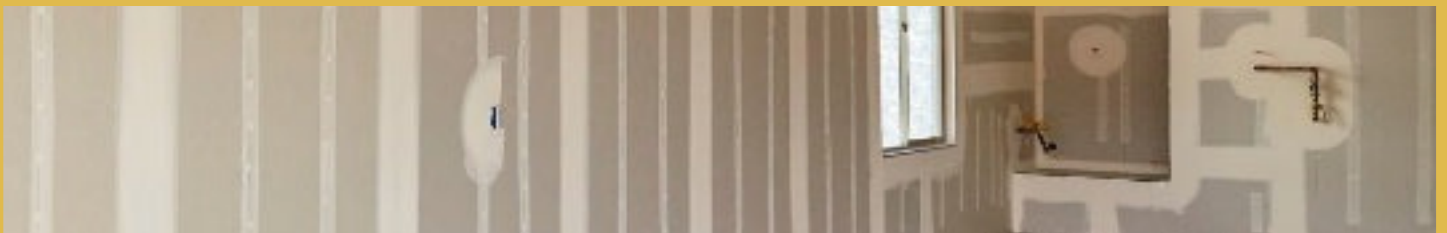
COARSE POLYMERIZED MORTAR

CHARACTERISTICS

- Ready-to-use
- Elastomeric
- Paintable plaster
- Water repellent
- Suitable for RCC & AAC block work
- Color options
- Excellent adhesion



COVERAGE: 40-45 SQ.FT, PER 20 KG FOR 2.5- 3 MM OF P-LASTER





FILL-O-CRACK | SPECIALIST SERIES

GROUT CUM CRACK FILLER

CHARACTERISTICS

- Elastomeric paste
- Crack-free
- UV resistant
- Abrasion resistant
- Color fast
- Ready-to-use
- Water resistant
- Tough & durable
- Available in colors
- Anti-fungal



COVERAGE: AS PER SIZE OF THE CRACK



FLEXO | SPECIALIST SERIES

CRACK FILLER

CHARACTERISTICS

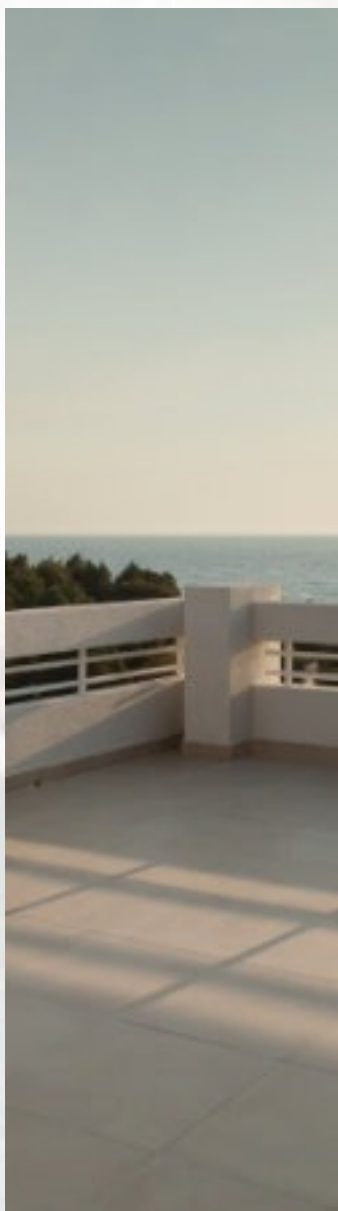
- Crack filler cartridge
- Strong adhesion
- Washable
- Versatile application
- Direct application
- User-friendly
- Easy voids filling
- Self-levelling



COVERAGE: 75 RFE PER SQ.FT FOR 450 GRMS FLEXO



OUR WATER PROOFING SERIES





LEAK PROOF | WATER PROOFING SERIES

LEAK PROOF PART ONE (FOR FINER VOIDS)

- ➔ WASHABLE
- ➔ ANTI-DAMP
- ➔ ECO-FRIENDLY
- ➔ ANTI-FUNGAL



Can be used together or separately.

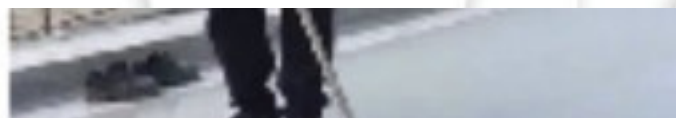
LPPO (Leak Proof Part One) is in a liquid format and its coverage will vary depending on the finesse of voids. It impregnates into the pores and seals it completely. This can be brush applied and the maximum thickness derived is around 55 - 60 microns.

APPLICATION PROCEDURE

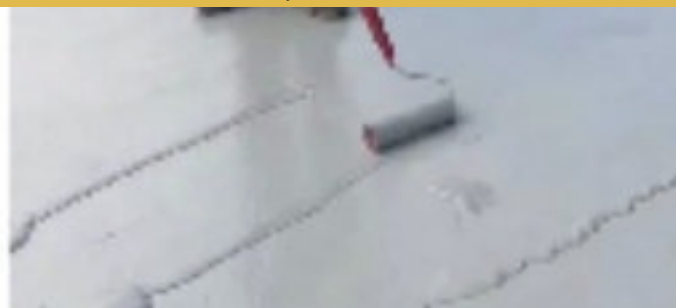
- Clean the surface of all loose particles
- Apply LPPO with a brush or roller moving it in all 8 directions.
- Apply in two coats giving a gap of 6 hrs between coats
- NO DILUTION REQUIRED .

UTILITY AREA

- Precast panel joints
- Window sills
- Terrace
- Sunken portion
- Water tanks
- Precast water tanks
- Swimming pools



COVERAGE: 800 - 900 SQ.FT IN TWO COATS, PER 20 KG





LEAK PROOF | WATER PROOFING SERIES

LEAK PROOF PART TWO (FOR BIGGER VOIDS)

- ➔ WASHABLE
- ➔ ANTI-DAMP
- ➔ ECO-FRIENDLY
- ➔ ANTI-FUNGAL



Can be used together or separately.

LPPT (Leak Proof Part Two) is in a paste format. This is used to fill bigger voids and to make the surface abrasion resistant. Must be used along with nylon membrane/mesh as a reinforcing agent.

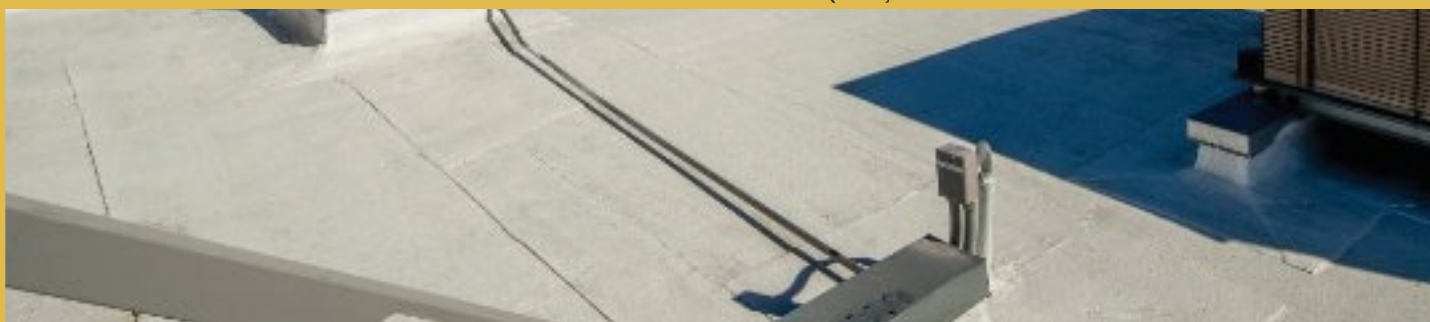
APPLICATION PROCEDURE

- Clear the surface of all loose particles
- Apply LPPT with a brush or roller in two coats moving the roller in all 8 directions.
- Maintain a gap of 6 hrs between coats
- For deeper voids apply LPPT with a roller and affix nylon mesh over the wet surface.
- Remove the excess LPPT by scraping with a putty blade and put the material back into the container
- Apply second coat of LPPT with a gap of 10-12 hours between coats to cover the net fully.

UTILITY AREA

- Window sills
- Terrace
- Sunken portion
- Water tanks
- Precast water tanks
- Swimming pools
- Pre cast panels

COVERAGE: 140-150 SQ.FT, PER 20 KG





SEALO | WATER REPELLANT

SILICONE BASED WATER REPELLANT



➔ DRY LOOK

➔ WET LOOK

APPLICATION PROCEDURE

- It is a ready-to-use material
- Can be applied with a roller or brush or spray.
- It must be applied in two coats with a gap of six to eight hours between coats.

UTILITY AREA

- Stones
- Cement Board
- Commercial Ply
- Exposed Bricks

COVERAGE: 140-150 SQ.FT, IN TWO COATS PER 20 LTR





R-ONE | RANGE OF PRIMERS

WATER-BASED PRIMER

CHARACTERISTICS

- Good flow & levelling
- Good adhesion
- Smooth finish
- Quick-drying
- Easy brush-ability of paints



COVERAGE: 1600-1700 SQ.FT, IN TWO COATS PER 20 LTR

R-TWO | RANGE OF PRIMERS

SOLVENT-BASED WOOD PRIMER

CHARACTERISTICS

- Solvent thin undercoat for wood surfaces
- Ensures uniform deposition of top coat
- Superior opacity
- Excellent nail hardness
- Excellent adhesion
- Increase coverage of top coat



COVERAGE: 1600-1700 SQ.FT, IN TWO COATS PER 20 LTR

XXX | RANGE OF PRIMERS

RED OXIDE METAL PRIMER

CHARACTERISTICS

- Solvent thin undercoat for wood surfaces
- Ensures uniform deposition of top coat
- Superior opacity
- Excellent nail hardness
- Excellent adhesion
- Increase coverage of top coat



COVERAGE: 1600-1700 SQ.FT, IN TWO COATS PER 20 LTR



PRO | ENAMELS

GLOSSY ENAMEL

CHARACTERISTICS

- Exterior grade
- Good shelf life
- Available in ready to use paste form
- Covers the joints completely & gives a seamless finish
- Excellent co-efficient of expansion & contraction
- Works like a shock absorber



COVERAGE: 150-160 SQ.FT, IN TWO COATS PER 20 LTR



MATTY | ENAMELS

MATTE ENAMEL

CHARACTERISTICS

- Crack free bond
- Exterior grade
- Excellent adhesion
- Water repellent
- Ready to use paste



COVERAGE: 150-160 SQ.FT, IN TWO COATS PER 20 LTR

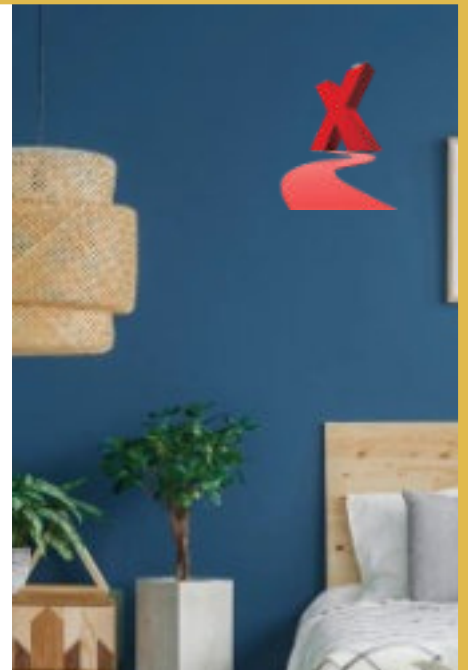


OB-2 | ECONOMICAL INTERIOR RANGE

OIL BOUND DISTEMPER

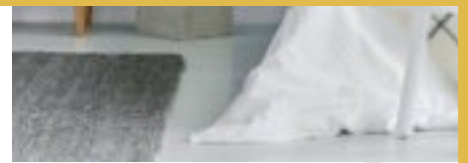


COVERAGE OVER MAGIC XP: 600 - 800 SQ.FT IN TWO COATS, PER 20 KG



GLORY | ECONOMICAL INTERIOR RANGE

ACRYLIC DISTEMPER



CHARACTERISTICS

- Excellent Hiding
- Seamless Finish
- Dry Scrub Resistant
- Uniform Color Dispersion

COVERAGE OVER MAGIC XP: 80 - 90 SQ.FT IN TWO COATS, PER 20 KG

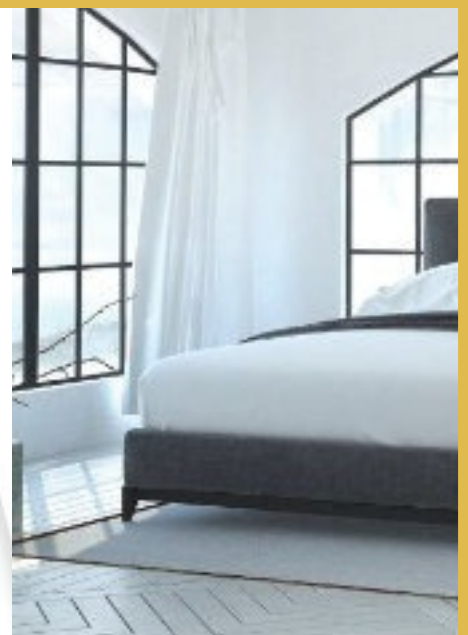


INTO | ECONOMICAL INTERIOR RANGE

INTERIOR EMULSION



COVERAGE OVER MAGIC XP: 100-110 SQ.FT, PER 20 LTR





SPADE

PREMIUM WASHABLE EMULSION

CHARACTERISTICS

- Mild Sheen
- Excellent Washability
- Smooth Surface



COVERAGE OVER MAGIC XP: 130 - 140 SQ.FT, PER 20 LTR



SILKINA

LUXURY EMULSION

CHARACTERISTICS

- Good Sheen
- Superior Washability
- Smooth Surface



COVERAGE OVER MAGIC XP: 1300-1400 SQ.FT, PER 20 LTR

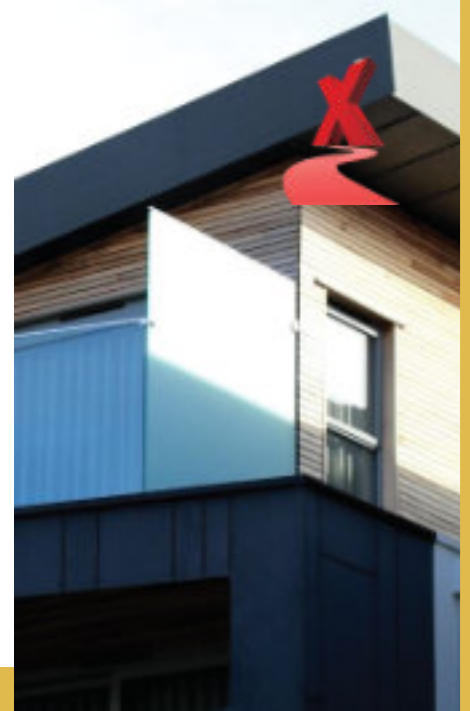


EXTO

EXTERIOR EMULSION



COVERAGE OVER MAGIC XP: 100 - 110 SQ.FT, PER 20 LTR



EXTO PREMIUM

PREMIUM EXTERIOR EMULSION

CHARACTERISTICS

- Excellent Washability
- Anti-Fungal
- Smooth Surface
- Weather Touch/Mild Sheen

COVERAGE OVER MAGIC XP: 1300-1400 SQ.FT, PER 20 LTR

WEATHER TOUCH

ANTIFUNGAL EMULSION

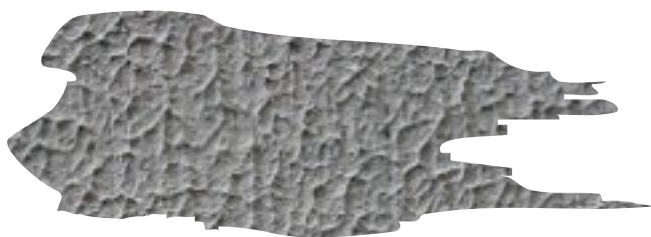


COVERAGE OVER MAGIC XP: 1300-1400 SQ.FT, PER 20 LTR





TEXTURES



ROLEX

Roller Finish



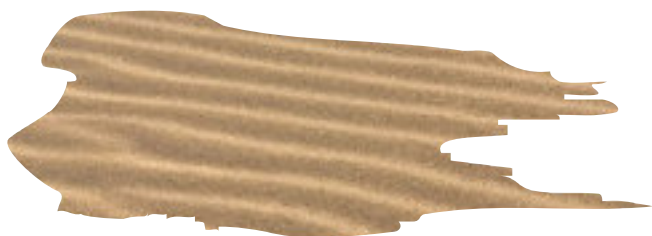
DEW DROPS

Spray Finish



RUSTEX

Trowel Finish



SANDDUNES

Brush Finish



SOFTEX

Soft Texture

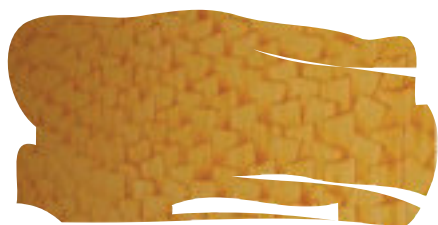


STONE FINISH

Stone Look Finish



DESIGNER RANGE



SHOW OFF

Elegant Dual Tone Finish with Graphic Pattern



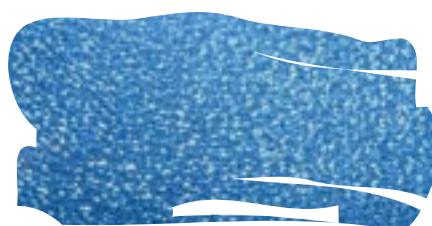
CRACKLE

Available in Regular and Metallic



DUALTOUCH

Metallic Dual Tone Finish with Rustex Texture



SILK CUT

Two Tone Silver Leaf Effect



WEAVE MAGIC

Weave Effect, Brushing in Dual Tone



ITALIANO

Marble Finish

CRACKS ARE A MAJOR PROBLEM IN

PRE-CAST CONSTRUCTION



AAC BLOCK CONSTRUCTION



DRY WALL CONSTRUCTION



PLASTERED WALLS



ELIMINATES THE USE OF PRIMERS AND SANDING

MAGIC XP IS THE SOLUTION



Eco-Friendly



Available in Colors



Elastomeric



Indentation Resistant

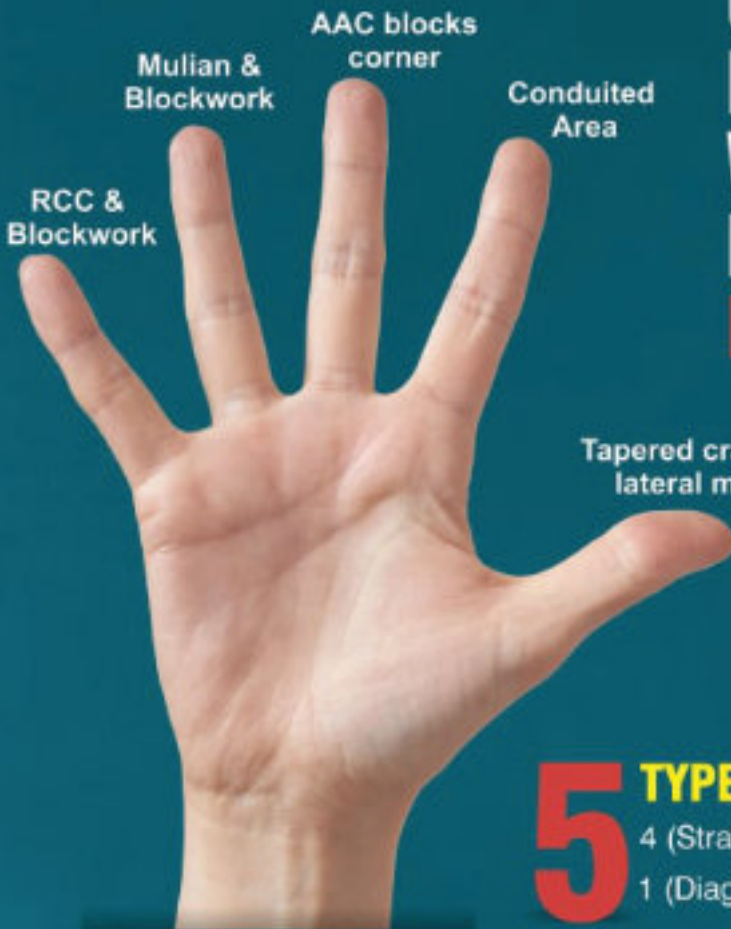


Hydrophobic

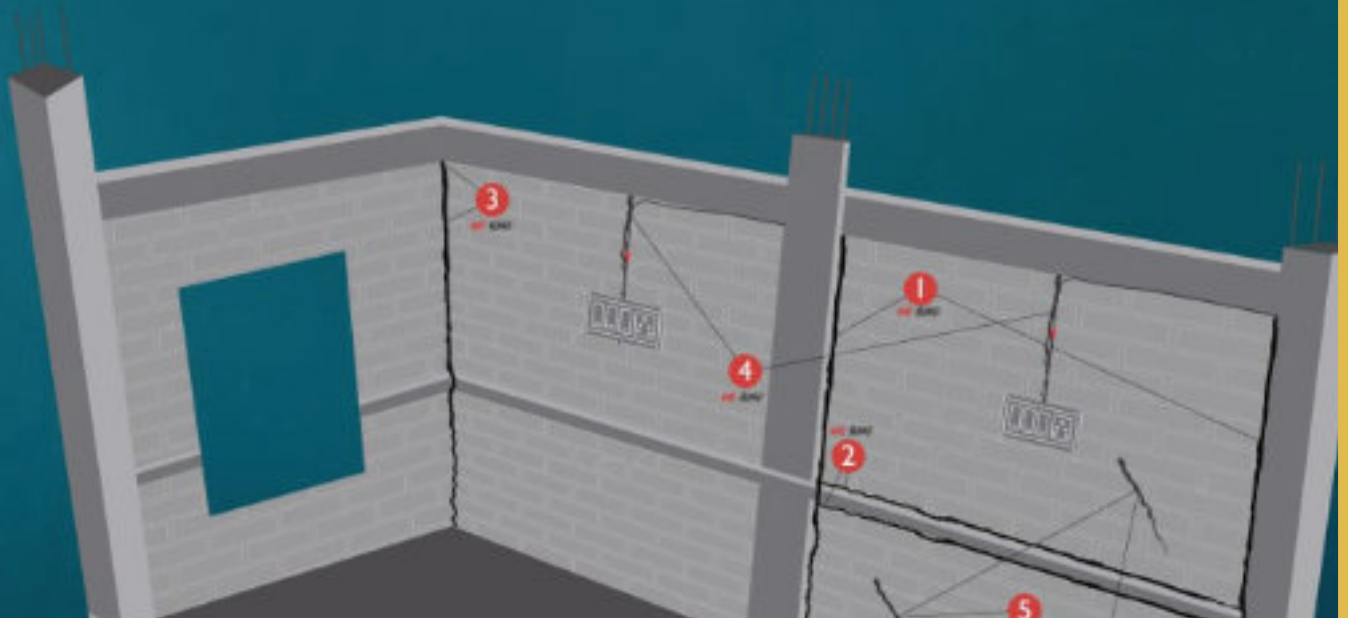


Anti-Fungal

IF CRACK IS THE ONLY PROBLEM IN AAC BLOCKS, WE HAVE A SOLUTION IN AAC BOND + MAGIC XP



5 TYPES OF CRACKS ON AAC BLOCKS
4 (Straight line Crack) can be arrested by AAC BOND
1 (Diagonal line Crack) **Magic XP**





HEAD OFFICE

Delhi



ADDRESS

786 Aggarwal Cyber Plaza 2
Netaji Subhash Place
Pitampura, New Delhi 110034

BRANCH OFFICE

Haryana, Maharashtra, Tamil Nadu, Karnataka, Kerala

EMAIL xylo@xylopaints.com

CONTACT +91-9810156132

www.xylopaints.com



www.xylopaints.com