



Xylo[®] *paints...*
Shades of innovation

Technical Details
SPECIALIST SERIES

GYPO | GYPO PLUS | TILO | AAC BOND | NO CRACK
P-LASTER | FLEXO | FILL O CRACK

Edition:
March 2024





GYLO

BASE MATERIAL: Water Based

All Purpose Jointing Compound for Gypsum Board

INTERIOR GRADE

Gylo is available in ready to use paste to be used as jointing compound for gypsum board

GYLO PRODUCT BENEFITS



APJC for gypsum board



Gives seamless surface



Excellent coverage

COVERAGE

1000 SQ.FT PER 20 KG

NOMENCLATURE:

Providing and application of Gylo-APJC for gypsum boards. Fill the gap between the boards and affix nylon mesh on the joints when the surface is wet. Swipe out the excess material and return to the bucket. Allow to dry.



GYLO PLUS

BASE MATERIAL: Water Based

Polymerized Compound for Joints & Surface Preparation

INTERIOR GRADE

Polymerized compound for crack free joint filling and surface application over gypsum board. Gylo Plus is available in ready to use paste

GYLO PLUS PRODUCT BENEFITS



Only for gypsum board



Crack free



Excellent adhesion



Seamless surface

COVERAGE

For Jointing and Taping: 50-55 SQ.FT/KG

For Surface Application: 475 - 500 SQ.FT per 20 KG in 2 coats over gypsum

NOMENCLATURE:

Providing and application of Gylo Plus - Polymerized compound in the joints by sandwiching Gylo Plus with 45 GSM fiber mesh of three inches width and wrapping the entire surface with two coats of Magic Xp putty with Gylo Plus to get a seamless, non-water absorbent and paintable surface.



TILO

BASE MATERIAL:Water Based

Polymerized Tile Adhesive

EXTERIOR GRADE

Tilo is a polymerized ready to use paste for pasting tiles

TILO PRODUCT BENEFITS



Water repellent



Tile on tile pasting



Excellent adhesion

COVERAGE

3 SQ.FT PER KG

APPLICATION PROCEDURE

- Providing and fixing of tiles with Tilo-Polymerised tile adhesive on the levelled surface by applying Tilo to a minimum thickness of 1 to 1.5 mm on the back (grooved portion of the tile).
- Paste tile over levelled surface .
- Allow to dry for 7 days.



AAC BOND

BASE MATERIAL:Water Based

Super Polymerized Bond

EXTERIOR GRADE

Super polymerized bond for AAC block pasting with self levelling properties and excellent adhesion. AAC bond is available in ready to use paste

AAC BOND PRODUCT BENEFITS



Water repellent



Crack free bond



Excellent adhesion

COVERAGE

70 SQ.FT on 100 MM width of AAC block, per 20 KG

APPLICATION PROCEDURE

- Apply AAC bond on both sides of the brick and over the base using a comb blade.
- Paste the bricks one over the other and allow to dry



NO CRACK

BASE MATERIAL:Water Based

For Cement Boards/Panels & Pre Cast Panel Joints

EXTERIOR GRADE

No crack is a **ready to use (paste)** polymerized crack filler for cements boards and precast panels

NO CRACK PRODUCT BENEFITS



Water repellent



Crack free bond



Excellent adhesion



Seamless finish



An excellent coefficient of expansion and contraction

APPLICATION PROCEDURE

- Apply No crack over the joints between the cement boards /pre cast panels
- Apply fibre mesh when the material is wet.
- Scrape off excess material and return to bucket.
- Allow to dry.



P-LASTER

BASE MATERIAL:Water Based

Coarse Polymerized Mortar

EXTERIOR GRADE

It is a **ready to use**, elastomeric paintable plaster, for loading on RCC, AAC block work & repairing of plaster to a **minimum thickness of 5-6 mm in 1 go**.

P-LASTER PRODUCT BENEFITS



Water repellent



Available in Colors



Excellent adhesion

APPLICATION PROCEDURE

- Load the material over the surface with a trowel upto a maximum thickness of 12 mm in a single coat.
- Reinforce with wire mesh of 45 gsm by pasting it over the wet P laster material .
- It is recommended to load the material in multiples of 6-8 mm thickness.Allow to dry for 48 hrs.
- Finishing has to be done with 2 coats of magic Xp-Elastomeric Paintable Putty



FILL O CRACK **BASE MATERIAL:**Water Based

Grout cum Crack Filler

EXTERIOR GRADE

Fill o crack is an Elastomeric, Crack free paste that is an UV Resistant, abrasion resistant ,color fast material available in ready to use form

FILL O CRACK PRODUCT BENEFITS



Water Resistant



Color Fast



Anti-Fungal



Available in Colors



Tough & Durable



Indentation Resistant

APPLICATION PROCEDURE

- Open the groove/crack with a sharp blade.
- Fill the crack with material using a putty blade overlapping the material on either side by 2 mm.
- Allow to dry for 4 hours.
- If material shrinks in apply a finishing coat and allow to dry



FLEXO **BASE MATERIAL:**Water Based

Crack Filler

EXTERIOR GRADE

A crack filler in a cartridge for application on any fine cracks. It is washable and can be directly used from cartridge.

FLEXO PRODUCT BENEFITS



Fills voids easily



Self levelling



Strong adhesion

COVERAGE

75 RFE per SQ.FT for 450 gms Flexo

APPLICATION PROCEDURE

- Open the crack with a sharp tool.
- Fill the material into the crack using the nozzle attached to the cartridge .
- Allow to dry for 6 hours

Technical details - Interior Grade

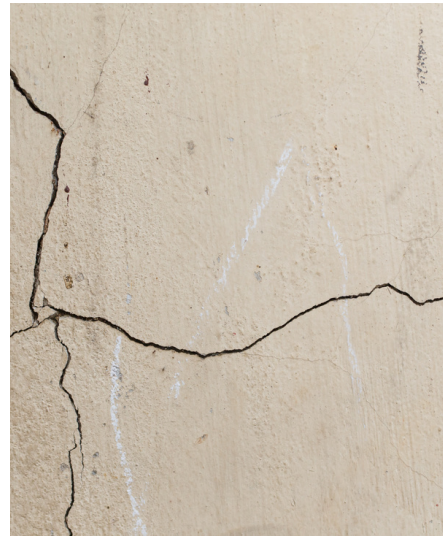


<u>PARTICULARS</u>	<u>GYPO</u>	<u>GYPO PLUS</u>
VISCOCITY WITH WATER 2:1	18 Seconds	17 Seconds
WEIGHT/LTR	1.68 KG/LTR	1.70 KG/LTR
LEVELLING	SELF LEVELLING	SELF LEVELLING
PH	7	7.2
POT LIFE	1 hour	2 hours
SURFACE DRYING	15 Minutes	30 Minutes
HARD DRYING	After 1 hour	After 4 hours
SOLID CONTENT	73%	80%
COLOR	Fawn	Light Cream
FINISH	Smooth	Smooth

Technical Details - Exterior Grade



PARTICULARS	TILO	NO CRACK	AAC BOND	P-LASTER
VISCOSITY WIH WATER 2:1	14-15 Secs	18 secs	16 Secs	-
VISCOSITY AT 50%	-	-	-	16 Secs
WEIGHT/LTR	1.67 Kg/Ltr	1.68 Kg/Ltr	1.63 Kg/Ltr	1.69 Kg/Ltr
LEVELLING	Self Levelling	Self Levelling	Self Levelling	Self Levelling
PH	7.3	7.3	7.2	7-8
POT LIFE	3 Hours	3 Hours	3 Hours	3 Hours
SURFACE DRYING	1 Hour	30 Mins	30 Mins	30 Mins
HARD DRYING	In 7-20 days	After 4 hours	After 4 hours	After 4 hours
SOLID CONTENT	80%	80%	77%	80%
FINISH	Rough	Rough	Rough	-
WASHABILITY	Not applicable	Not applicable	Not applicable	-
MIN. THICKNESS (MICRONS)	1000	500	1000	-
RECOATABILITY	-	-	-	-
COLOUR	Light Fawn	Light Cream	Light Grey	-



#786 Aggarwal Cyber Plaza 2, Netaji Subhash Place,
Pitampura, New Delhi 110034

xylo@xylopaints.com | +91-9810156132

www.xylopaints.com

NEW DELHI | HARYANA | MAHARASHTRA | TAMIL NADU | KARNATAKA | KERALA